

SPECIFICATION

Brass P-trap

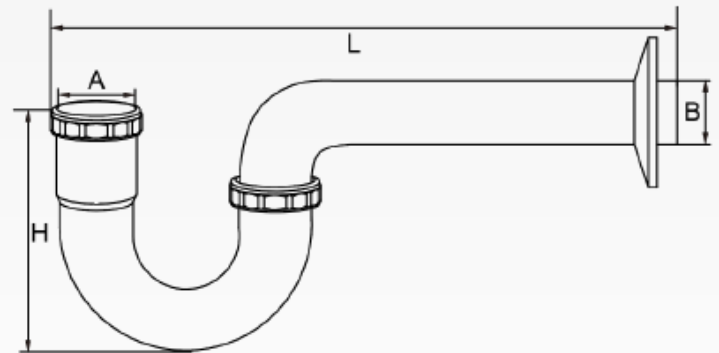
Product Features:

- Material: brass
- Less cleanout
- Chrome plated
- IAPMO listed



Product Specifications:

Model #	A	B	H	L
1411-0033-PC	1.53"	1.50"	4.88"	12.06"
1411-0013-9.5-PC	1.28"	1.25"	4.88"	13.50"
1411-0013-PC	1.28"	1.25"	4.88"	11.56"
1411-0011-PC	1.28"	1.25"	4.88"	11.56"
1411-0031-PC	1.53"	1.50"	4.69"	12.44"



Model #	Description	Gauge
1411-0033-PC	1-1/2" CP brass P-trap less cleanout	22
1411-0013-9.5-PC	1-1/4" CP brass P-trap less cleanout with 9.5" wall tube	22
1411-0013-PC	1-1/4" CP brass P-trap less cleanout	22
1411-0011-PC	1-1/4" CP brass P-trap less cleanout	17
1411-0031-PC	1-1/2" CP brass P-trap less cleanout with 8.125" wall tube	17

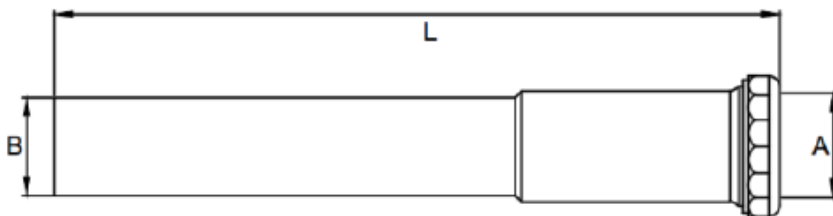
SPECIFICATION

Brass Extension Tube

Product Features:

- Material: brass
- Slip joint
- Chrome plated
- IAPMO listed

Product Specifications:

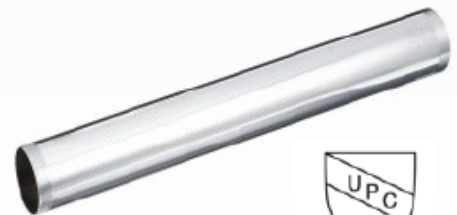
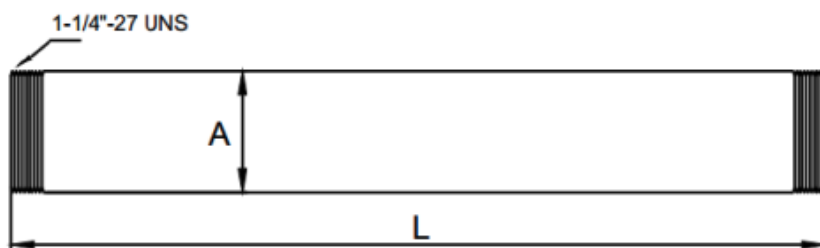


Model #	Description	Gauge	A	B	L
1411-0629-PC	1-1/4" X 6" CP brass slip joint extension tube	22	1.28"	1.25"	6.06"
1411-0651-PC	1-1/2" X 12" CP brass slip joint extension tube	22	1.52"	1.50"	12.12"

Product Features:

- Material: brass
- Threaded both ends
- Chrome plated
- IAPMO listed

Product Specifications:



Model #	Description	Gauge	A	L
1411-0707-PC	1-1/4" X 12" CP brass extension tube, threaded both ends	20	1.25"	12"