

SPECIFICATION

Sink Basket Strainer

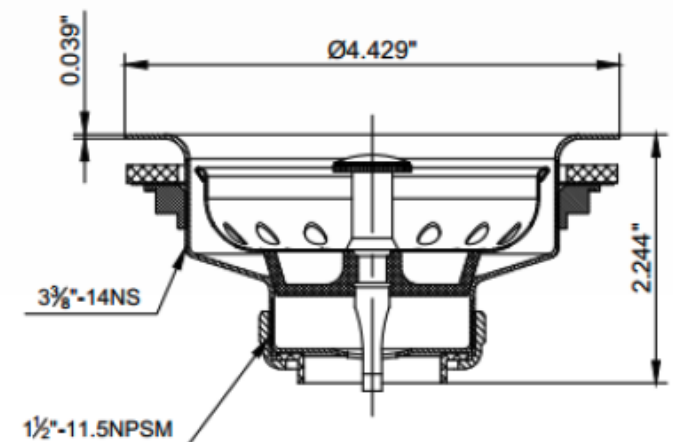
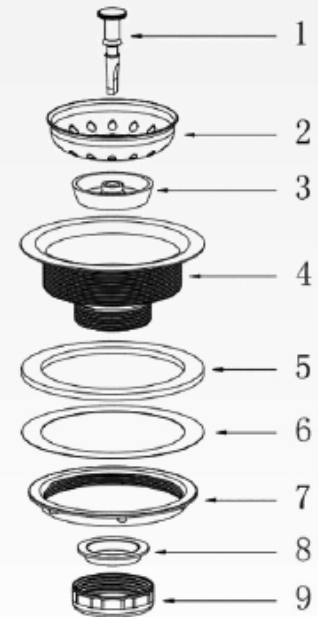
Product Features:

- Fits 3-1/2" to 4" sink opening
- Polished stainless steel body
- Stainless steel basket
- Fixed chromed plastic post
- Rubber stopper
- IAPMO listed

Product Specifications:

No.	Part Name	Material
1	Post	ABS, CP
2	Basket	SS430
3	Stopper	Rubber
4	Body	SS430
5	Gasket	Rubber
6	Friction Washer	Paper
7	Lock Nut	Zinc
8	Tailpiece Washer	LDPE
9	Slip Nut	Zinc

Model#	Description
1131-0011-SS	Stainless steel body with stainless steel basket & plastic post



SPECIFICATION

Sink Basket Strainer

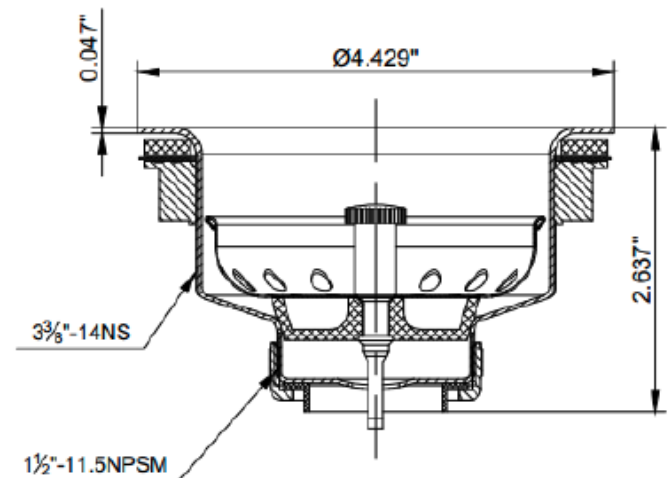
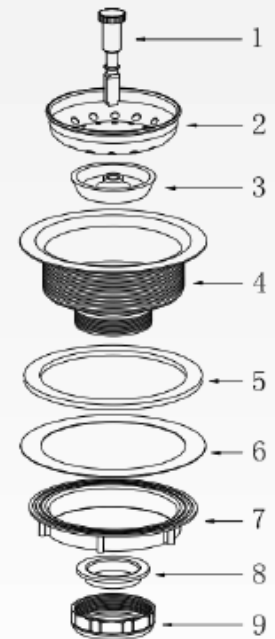
Product Features:

- Fits 3-1/2" to 4" sink opening
- Chrome plated heavy duty brass body
- Stainless steel basket
- Rubber stopper w/ fixed chromed metal post
- Heavy duty lock nut
- Extra thick rubber gasket
- Machine cut threads
- IAPMO listed

Product Specifications:

No.	Part Name	Material
1	Post	Zinc, CP
2	Basket	SS430
3	Stopper	Rubber
4	Body	Brass, CP
5	Gasket	Rubber
6	Friction Washer	Paper
7	Lock Nut	Zinc
8	Tailpiece Washer	TPR
9	Slip Nut	Zinc

Model#	Description
1131-0031-PC	CP brass body strainer with stainless steel basket & fixed metal post



SPECIFICATION

Sink Basket Strainer

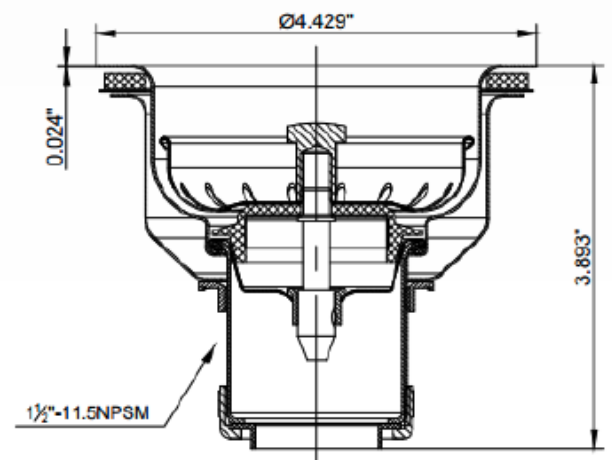
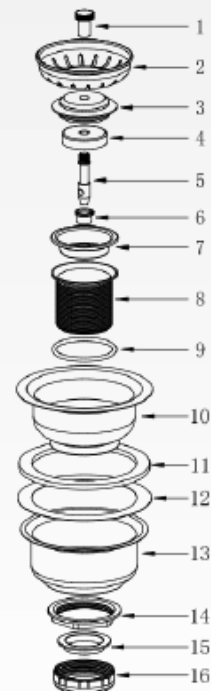
Product Features:

- Fits 3-1/2" to 4" sink opening
- Polished stainless steel body
- Stainless steel basket
- Snap-N-Tite chromed brass post
- Deep locking cup
- Rubber stopper
- IAPMO listed

Product Specifications:

No.	Part Name	Material
1	Post	Brass, CP
2	Basket	SS430
3	Gasket	Rubber
4	SS Washer	SS430
5	Marble Post	Brass, Nickel Plated
6	Main body core	Brass, Nickel Plated
7	Gasket	SS430
8	Shank	SS430
9	Seal Ring	Rubber
10	Body	SS430
11	Gasket	Rubber
12	Friction Washer	Paper
13	Cup	Steel
14	Lock Nut	Zinc
15	Tailpiece Washer	LDPE
16	Slip Nut	Zinc

Model#	Description
1131-0044-SS	Stainless steel body strainer with stainless steel basket & Snap-N-Tite brass post



SPECIFICATION

Sink Basket Strainer

Product Features:

- Fits 3-1/2" to 4" sink opening
- Polished stainless steel body
- Stainless steel basket
- Fixed chromed metal post
- Medium locking cup
- Rubber stopper
- IAPMO listed

Product Specifications:

No.	Part Name	Material
1	Post	Zinc, CP
2	Basket	SS430
3	Stopper	Rubber
4	Gasket	SS430
5	Seal Ring	Rubber
6	Body	SS430
7	Shank	SS430
8	Gasket	Rubber
9	Friction Washer	Paper
10	Mid Cup	Steek
11	Lock Nut	Zinc
12	Tailpiece Washer	LDPE
13	Slip Nut	Zinc

Model#	Description
1131-0051-SS	Stainless steel body strainer with stainless steel middle cup basket & fixed metal post

